

抚顺县木业循环经济产业园区建设项目-供暖 管线和换热站工程修建性详细规划公示

依据《中华人民共和国城乡规划法》第二十六条规定，现抚顺县木业循环经济产业园区建设项目-供暖管线和换热站工程修建性详细规划公示，请公众积极参与，提出宝贵意见。

规划编制组织单位：抚顺县通达园区建设发展有限公司

规划编制单位：抚顺市规划勘测设计研究院有限公司

公示时间：2023年12月11日—2023年12月19日

公示地点：抚顺县政府门户网站

反馈意见方式：

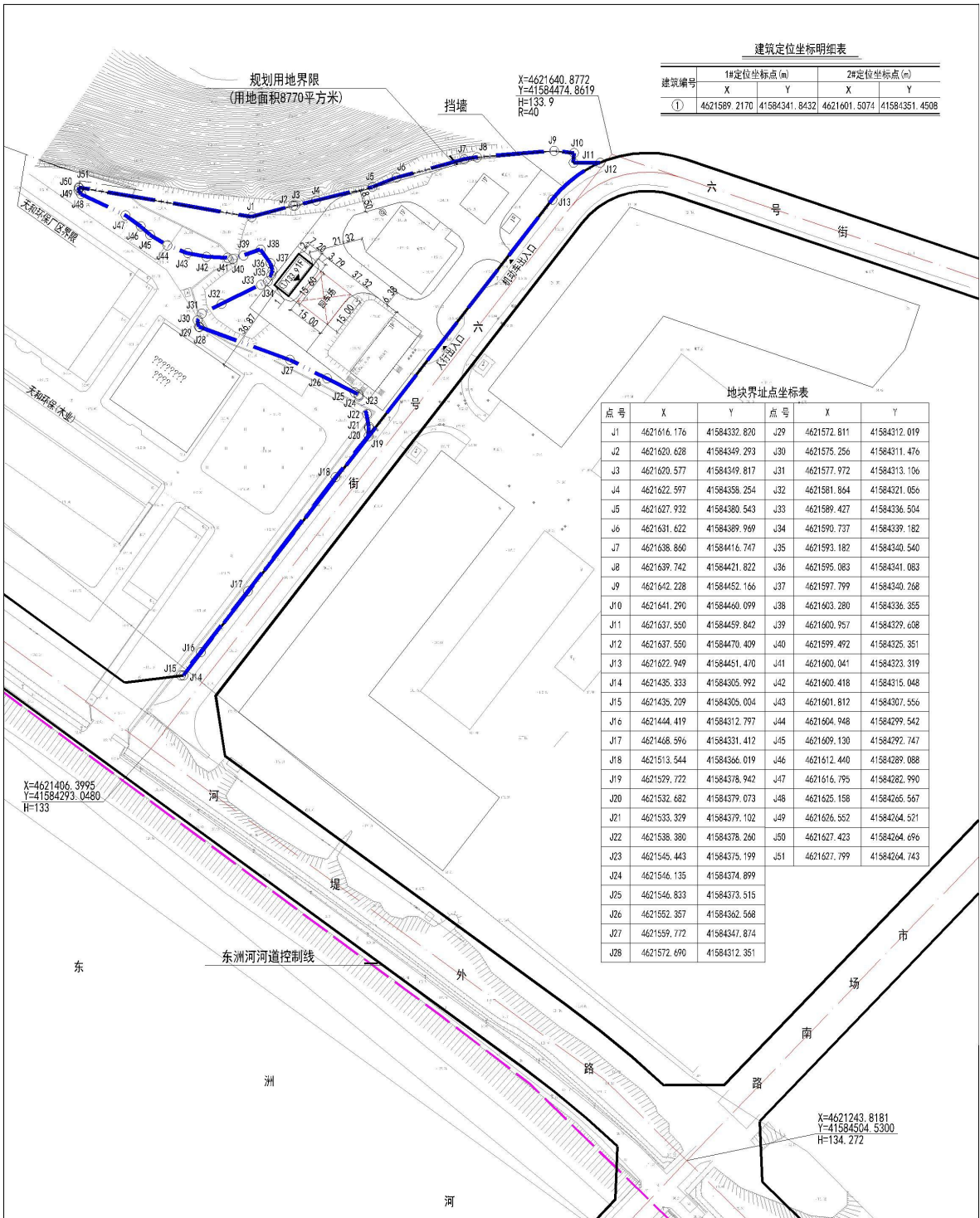
1、发送电子邮件：fsxzrzyjghb@163.com

2、寄邮件书面意见地址：抚顺市顺城区贵德街26号抚顺县自然资源局规划办，邮编：113006

3、联系电话：024-57599745

4、传 真：024-57599721

反馈意见请注明联系人及具体联系方式。



建筑定位坐标明细表

建筑编号	1#定位坐标点(m)		2#定位坐标点(m)	
	X	Y	X	Y
①	4621589.2170	41584341.8432	4621601.5074	41584351.4508

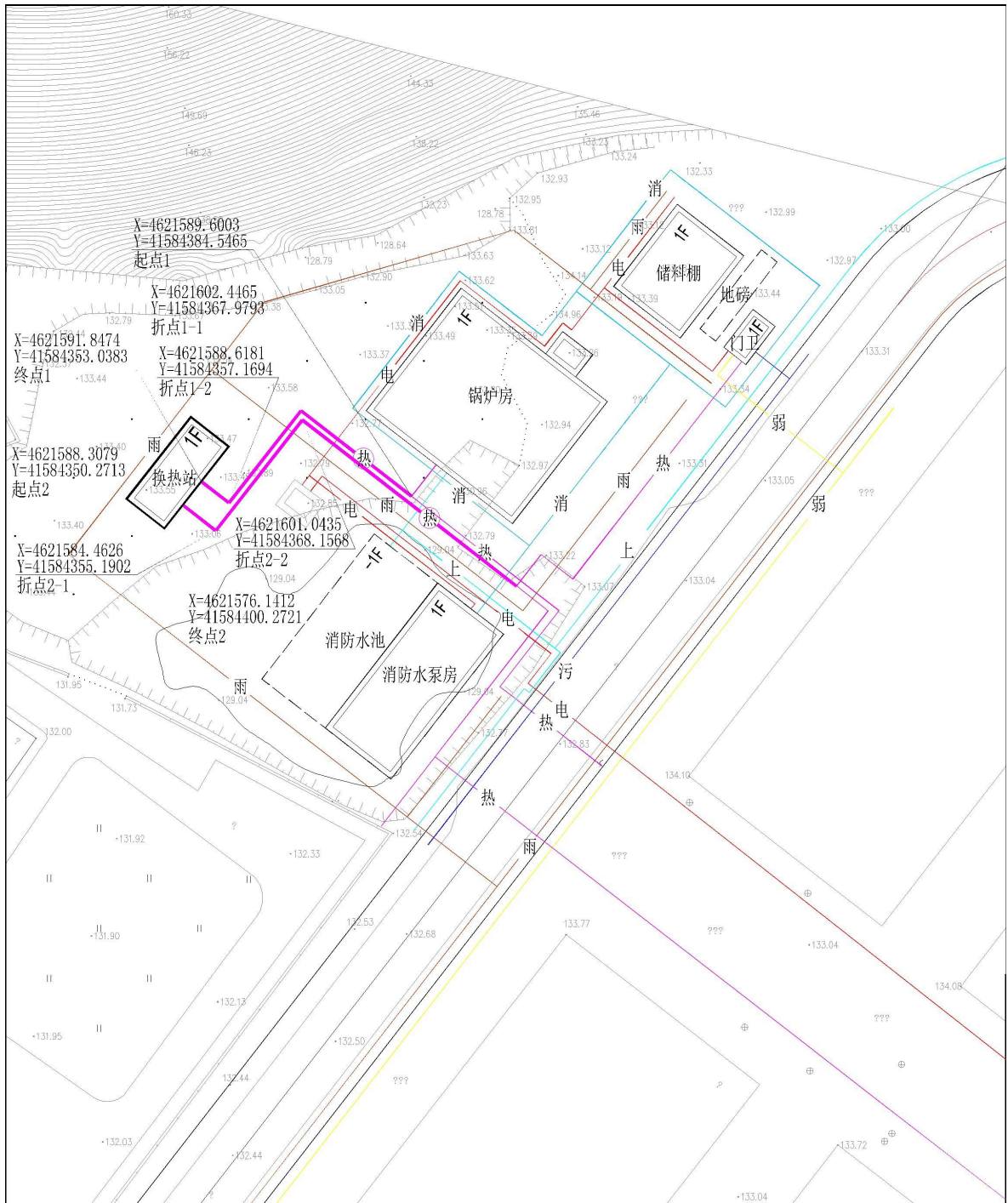
地块界址点坐标表

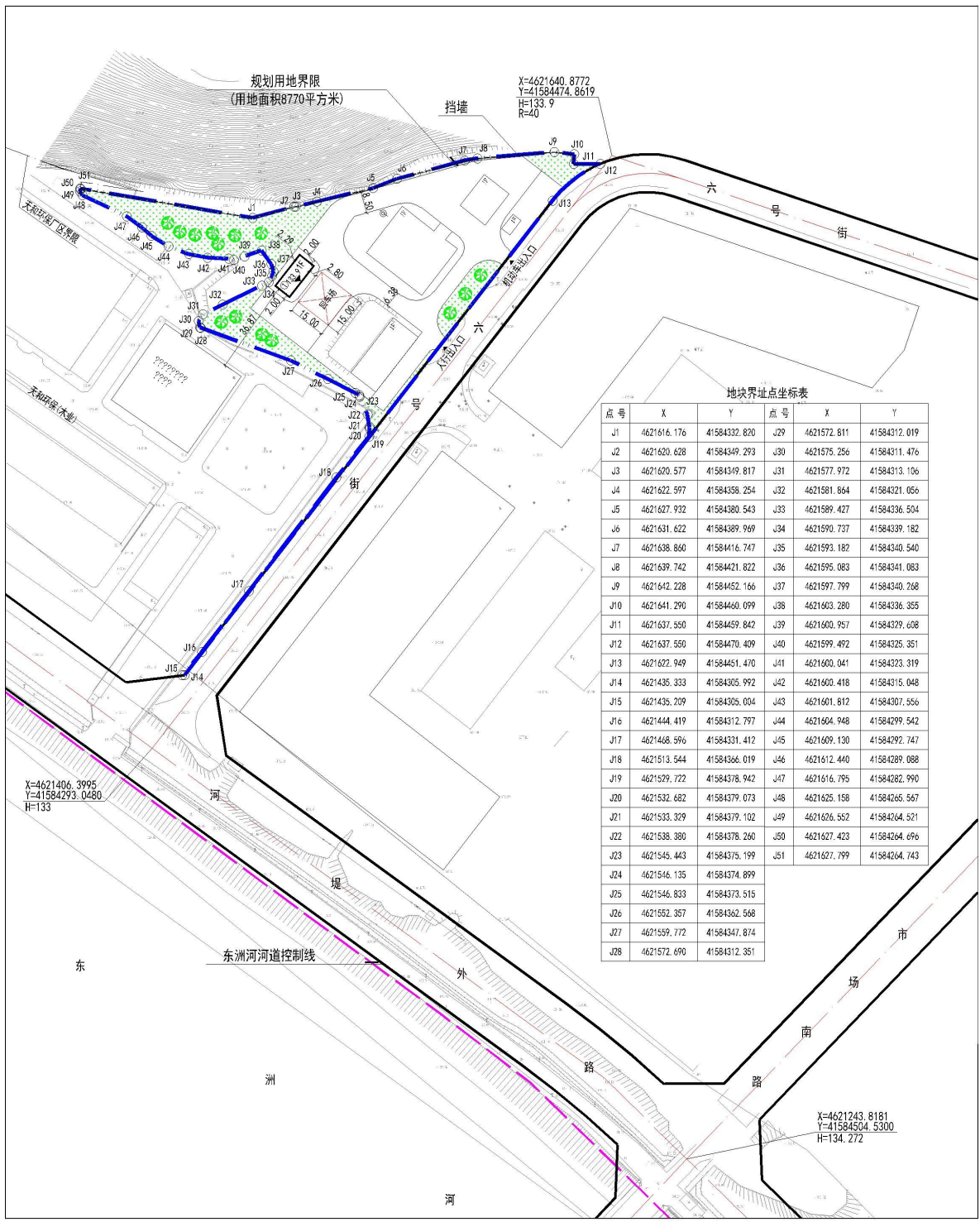
点号	X	Y	点号	X	Y
J1	4621616.176	41584332.820	J29	4621572.811	41584312.019
J2	4621620.628	41584349.293	J30	4621575.256	41584311.476
J3	4621620.577	41584349.817	J31	4621577.972	41584313.106
J4	4621622.597	41584358.254	J32	4621581.864	41584321.056
J5	4621627.932	41584380.543	J33	4621589.427	41584336.504
J6	4621631.622	41584389.969	J34	4621590.737	41584339.182
J7	4621638.860	41584416.747	J35	4621593.182	41584340.540
J8	4621639.742	41584421.822	J36	4621595.083	41584341.083
J9	4621642.228	41584452.166	J37	4621597.799	41584340.268
J10	4621641.290	41584460.099	J38	4621603.280	41584336.355
J11	4621637.550	41584459.842	J39	4621600.957	41584329.608
J12	4621637.550	41584470.409	J40	4621599.492	41584325.351
J13	4621622.949	41584451.470	J41	4621600.041	41584323.319
J14	4621435.333	41584305.992	J42	4621600.418	41584315.048
J15	4621435.209	41584305.004	J43	4621601.812	41584307.556
J16	4621444.419	41584312.797	J44	4621604.948	41584299.542
J17	4621468.596	41584331.412	J45	4621609.130	41584292.747
J18	4621513.544	41584366.019	J46	4621612.440	41584289.088
J19	4621529.722	41584378.942	J47	4621616.795	41584282.990
J20	4621532.682	41584379.073	J48	4621625.158	41584265.567
J21	4621533.329	41584379.102	J49	4621626.552	41584264.521
J22	4621538.380	41584378.260	J50	4621627.423	41584264.696
J23	4621545.443	41584375.199	J51	4621627.799	41584264.743
J24	4621546.135	41584374.899			
J25	4621546.833	41584373.515			
J26	4621552.357	41584362.568			
J27	4621559.772	41584347.874			
J28	4621572.690	41584312.351			

X=4621406.3995
Y=41584293.0480
H=133

X=4621640.8772
Y=41584474.8619
H=133.9
R=40

X=4621243.8181
Y=41584504.5300
H=134.272





规划用地界限
(用地面积8770平方米)

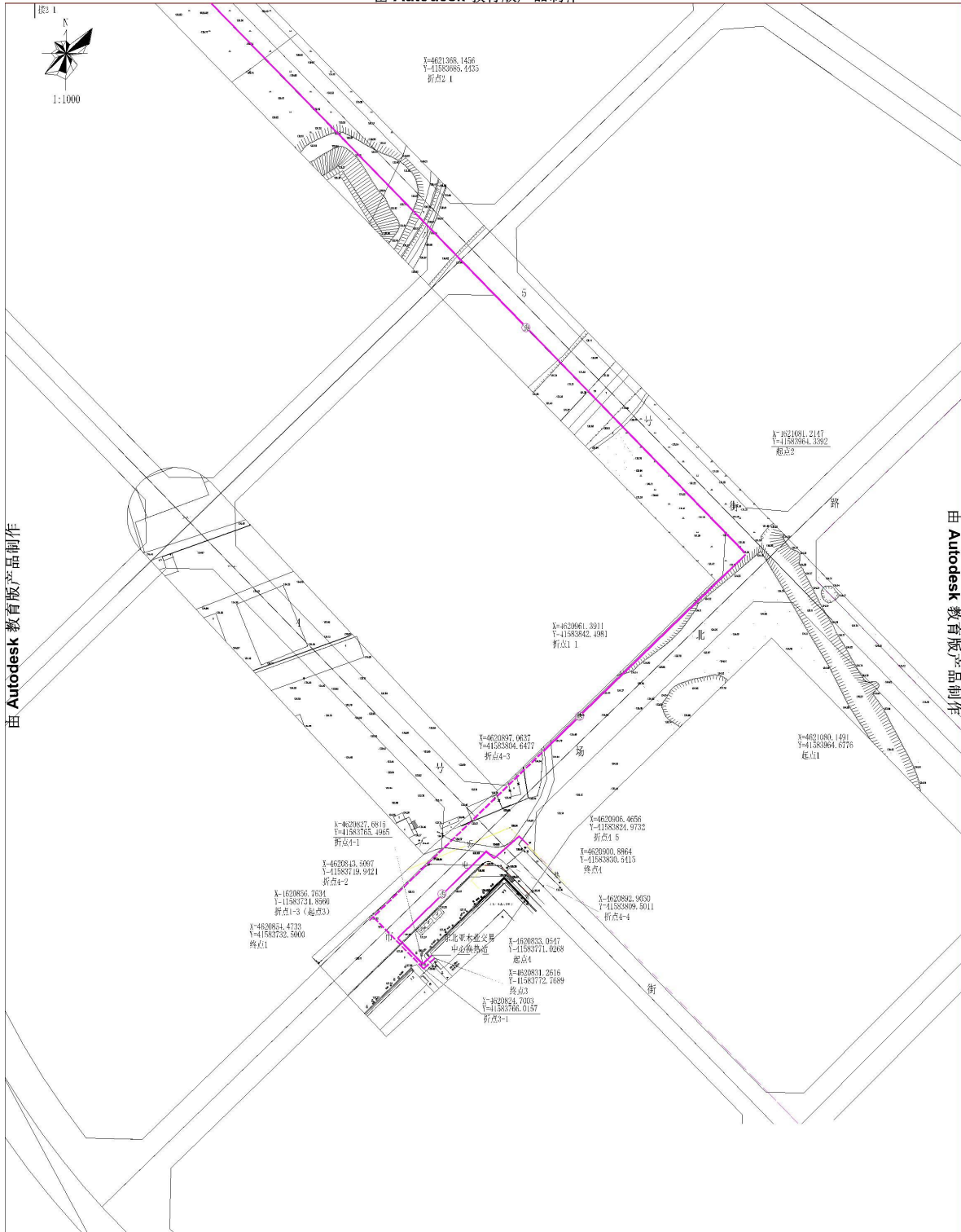
挡墙
X=4621640.8772
Y=41584474.8619
H=133.9
R=40

X=4621406.3995
Y=41584293.0480
H=133

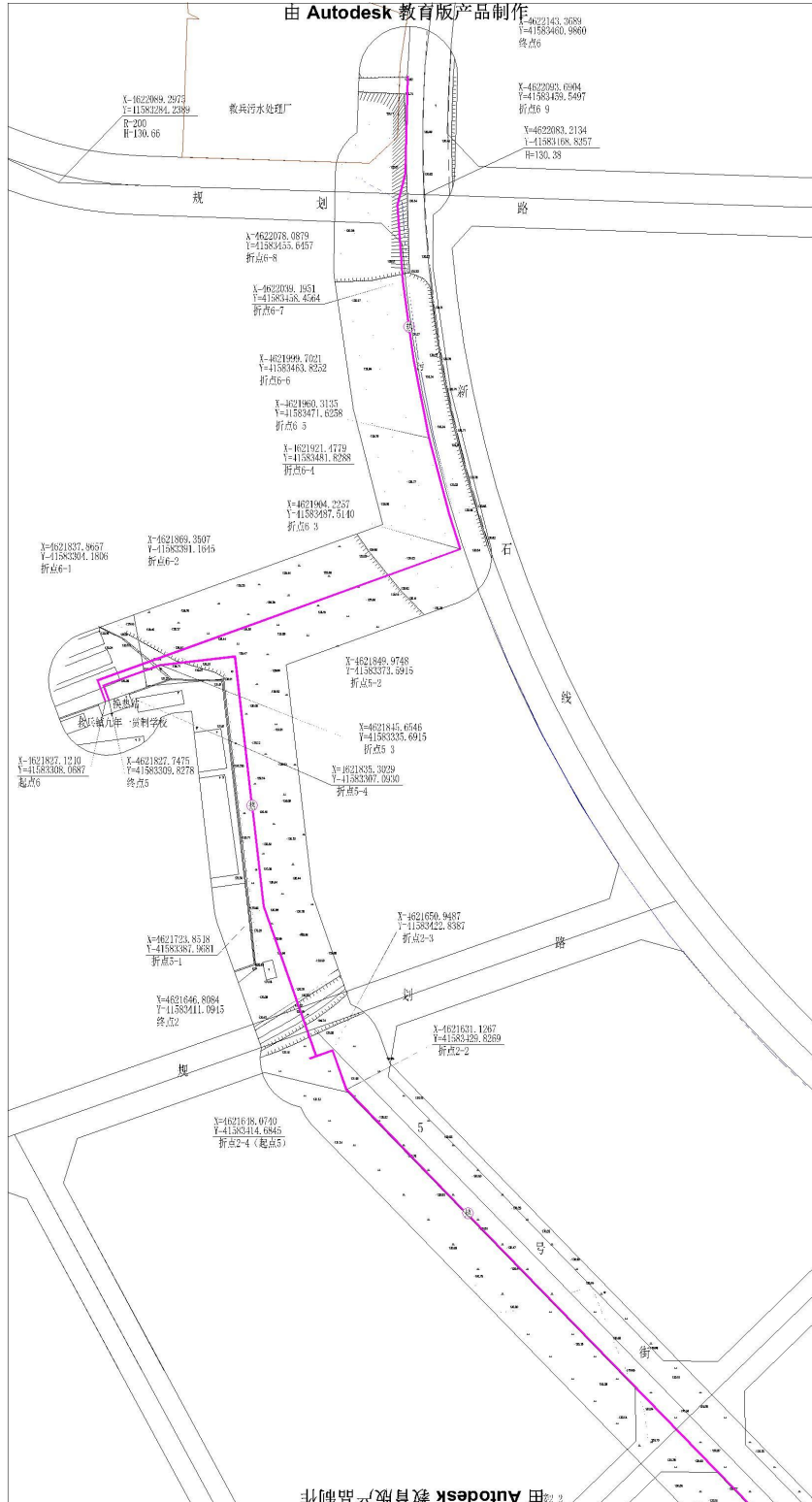
X=4621243.8181
Y=41584504.5300
H=134.272

地块界址点坐标表

点号	X	Y	点号	X	Y
J1	4621616.176	41584332.820	J29	4621572.811	41584312.019
J2	4621620.628	41584349.293	J30	4621575.256	41584311.476
J3	4621620.577	41584349.817	J31	4621577.972	41584313.106
J4	4621622.597	41584358.254	J32	4621581.864	41584321.056
J5	4621627.932	41584380.543	J33	4621589.427	41584336.504
J6	4621631.622	41584389.969	J34	4621590.737	41584339.182
J7	4621638.860	41584416.747	J35	4621593.182	41584340.540
J8	4621639.742	41584421.822	J36	4621595.083	41584341.083
J9	4621642.228	41584452.166	J37	4621597.799	41584340.268
J10	4621641.290	41584460.099	J38	4621603.280	41584336.355
J11	4621637.550	41584459.842	J39	4621600.957	41584329.608
J12	4621637.550	41584470.409	J40	4621599.492	41584325.351
J13	4621622.949	41584451.470	J41	4621600.041	41584323.319
J14	4621435.333	41584305.992	J42	4621600.418	41584315.048
J15	4621435.209	41584305.004	J43	4621601.812	41584307.556
J16	4621444.419	41584312.797	J44	4621604.948	41584299.542
J17	4621408.596	41584331.412	J45	4621609.130	41584292.747
J18	4621513.544	41584366.019	J46	4621612.440	41584289.088
J19	4621529.722	41584378.942	J47	4621616.795	41584282.990
J20	4621532.682	41584379.073	J48	4621625.158	41584265.567
J21	4621533.329	41584379.102	J49	4621626.552	41584264.521
J22	4621538.380	41584378.260	J50	4621627.423	41584264.696
J23	4621545.443	41584375.199	J51	4621627.799	41584264.743
J24	4621546.135	41584374.899			
J25	4621546.833	41584373.515			
J26	4621552.357	41584362.568			
J27	4621559.772	41584347.874			
J28	4621572.690	41584312.351			



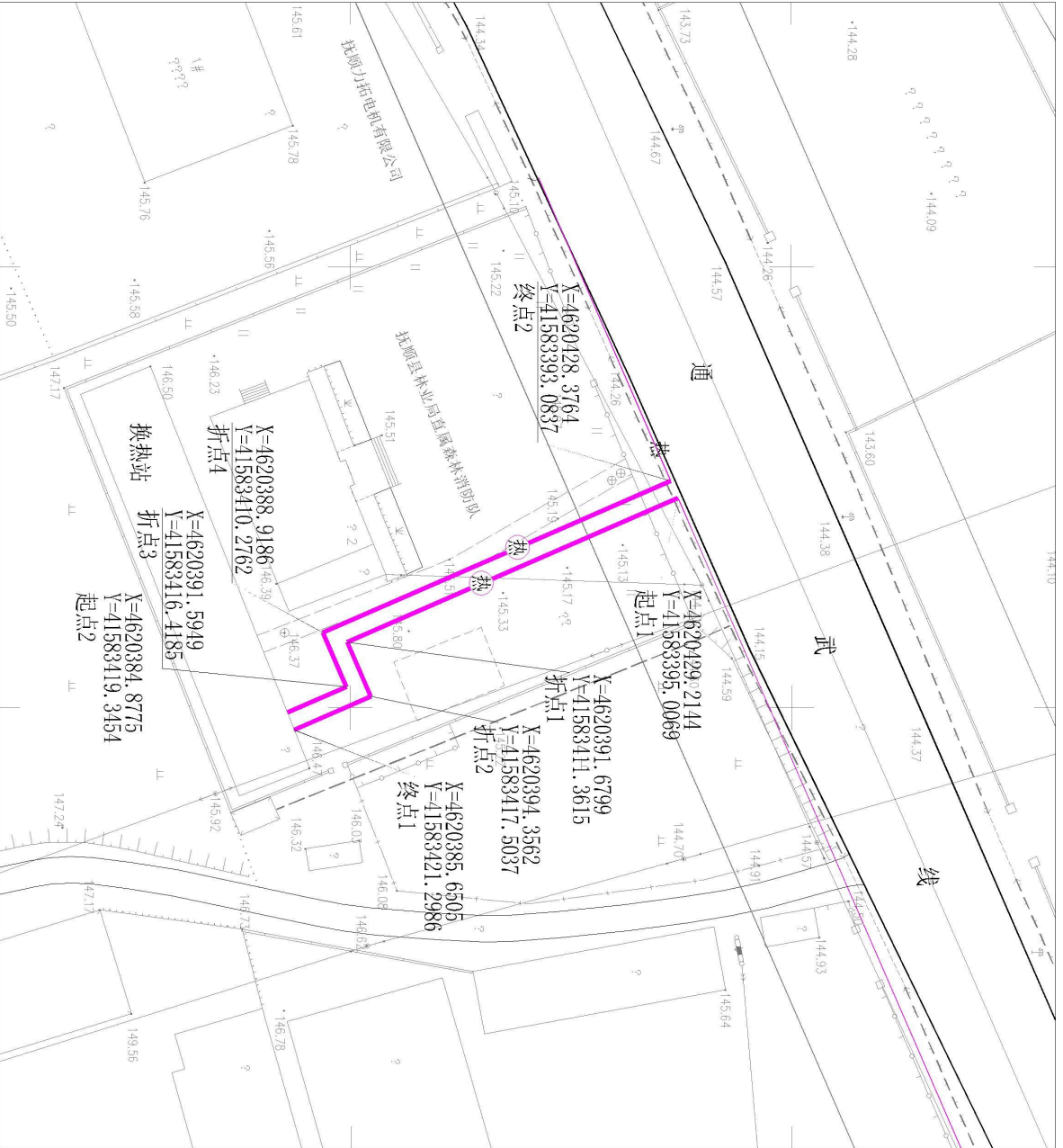
由 Autodesk 教育版产品制作

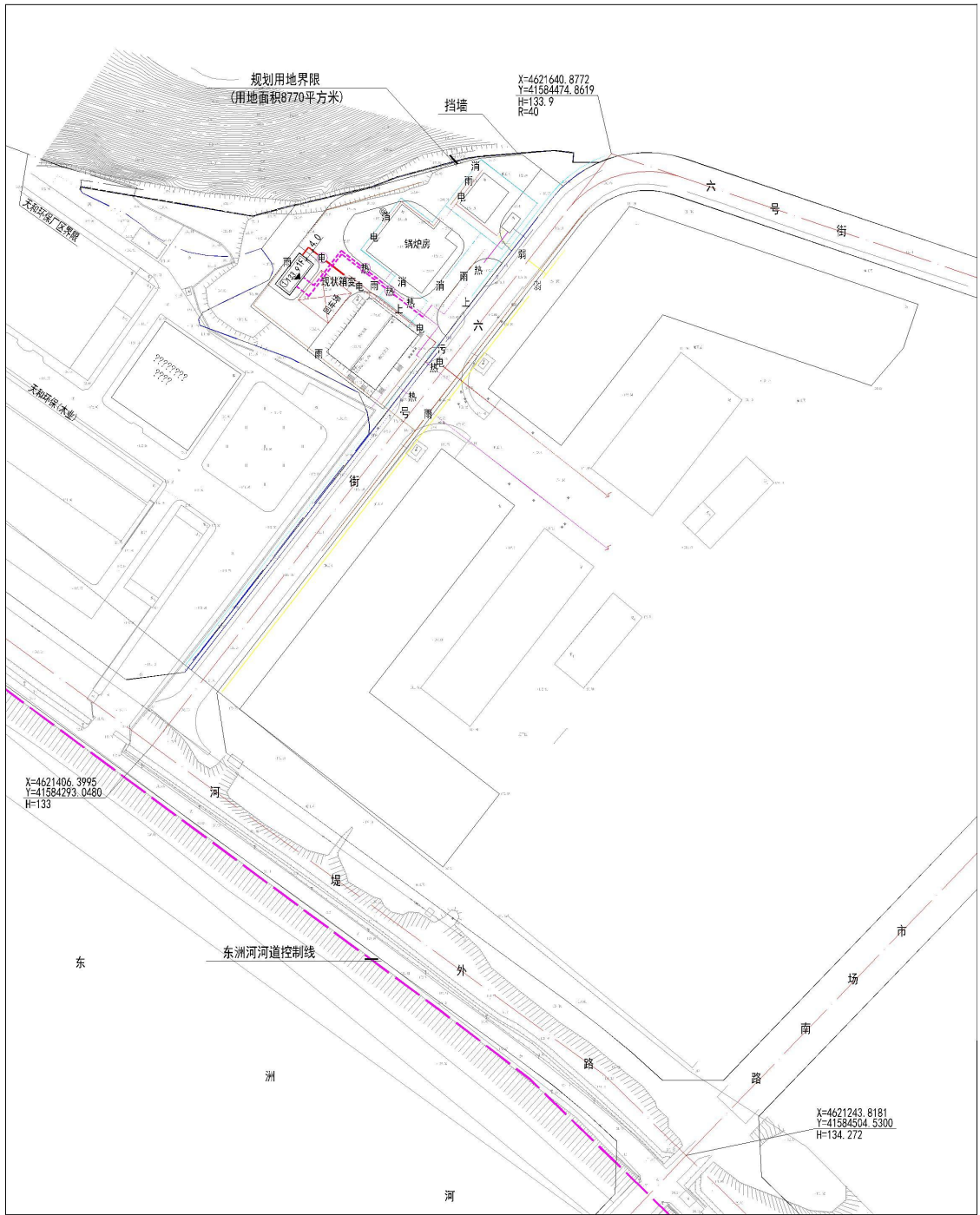


由 Autodesk 教育版产品制作

由 Autodesk 教育版产品制作

由 Autodesk 教育版产品制作





抚顺县自然资源局

2023年12月11日